

CentiCore™ HD Series High-Density Patch Panels

Overview

Engineered for optimal fiber management in demanding data center and telecom environments, the CentiCore™ High-Density Patch Panel Series delivers scalable solutions for high-density applications. Available in 1U, 2U, and 4U rack-mount configurations, these panels support LC connection densities of 144, 288, and 576 fibers, respectively.

Constructed from durable 16-gauge steel with a sleek black powder-coated finish, the CentiCore™ panels ensure both strength and a professional appearance. Designed to fit standard 19" racks, they can also be adapted for 23" racks with optional extension brackets for added versatility. Optional cable management brackets can be added to the front of the panels for enhanced organization.

User-friendly features include slide-out trays and a removable back cover, allowing easy access for maintenance and reconfiguration. The housings are fully compatible with CentiCore™ pre-terminated fanout cassettes and splice cassettes, which feature a plug-and-play, clip-in design for fast and hassle-free installation or upgrades.

Key Features

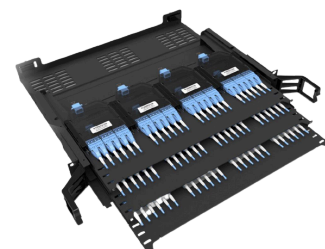
- CentiCore™ Series compatible
- Fits 19" Rack or 23" Rack with optional extension brackets
- Lightweight with a robust structure
- Changeable modules inside
- Suitable for both ribbon and round cable
- Maintains fiber bend radius above 40mm
- 16-Gauge steel with black powder finish coat
- Removable back cover for easy access to fiber
- Sliding tray for high-density situations
- Optional cable management brackets

Typical Applications

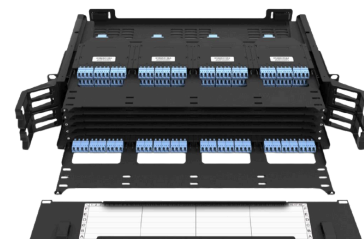
- Hyperscale Data Centers and Cloud Providers
- Telecommunications Central Offices and Metro Fiber Hubs
- Colocation (Multi-Tenant) Data Centers
- Financial Trading Networks
- Internet Exchange Points (IXPs) and Carrier-Neutral Facilities

Technical Specifications

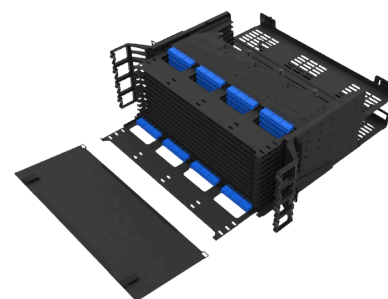
Material	16-Gauge Powder-Coated Steel
Color	Black
Mounting Style	19"/23" Rack-Mountable
Access	Sliding Trays and Removable Back Lid
RoHS Compliant	Yes



FT-HD1U-D22400



FT-HD2U-D40100



FT-HD4U-D40200

CentiCore™ HD Series High-Density Patch Panels

Configurations, Dimensions, & Capacity

Rack Unit	Width (A and B) (Inches)	Height (C) (Inches)	Depth (D and E) (Inches)	Weight (Unloaded) (lbs.)	Slots for Adapter Plates/Cassettes
1RU	(A) 17.44 (B) 19.0	1.75	(D) 17.86 (E) 4.0	13.2	12 CentiCore™ Cassettes
2RU	(A) 17.44 (B) 19.0	3.5	(D) 17.86 (E) 4.0	14.1	24 CentiCore™ Cassettes
4RU	(A) 17.44 (B) 19.0	7.0	(D) 17.86 (E) 4.0	15.8	48 CentiCore™ Cassettes

Ordering Information

Fibertronics Inc. CentiCore™ 19" 1U Patch Panel - Holds Up to (x12) Slim CentiCore™ Cassettes	FT-HD1U-D22400
Fibertronics Inc. CentiCore™ 19" 2U Patch Panel - Holds Up to (x24) Slim CentiCore™ Cassettes	FT-HD2U-D40100
Fibertronics Inc. CentiCore™ 19" 4U Patch Panel - Holds Up to (x48) Slim CentiCore™ Cassettes	FT-HD4U-D40200

Technical Drawing

